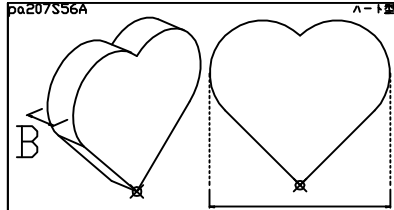
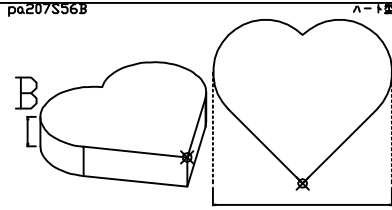


雅2000 伸縮部材追加一覽

下台／中台／上台

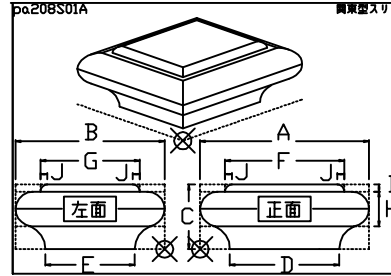


※部材の全高は、おおよそ $A \times 0.917$ になります。

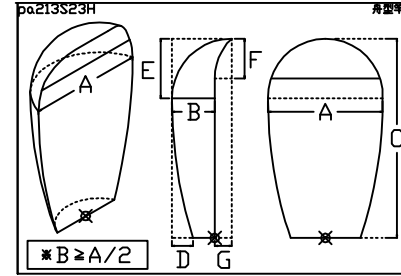


※部材の奥行は、おおよそ $A \times 0.917$ になります。

座布団／スリン

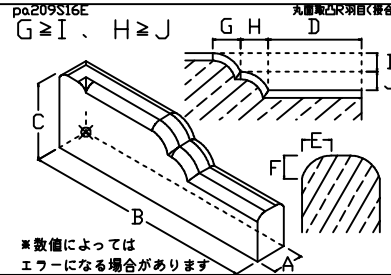
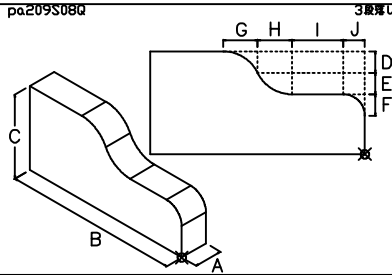
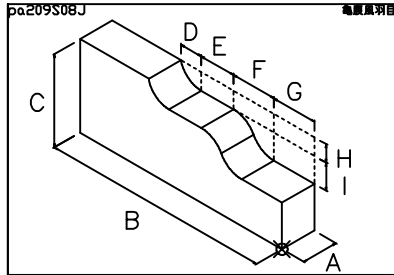


竿



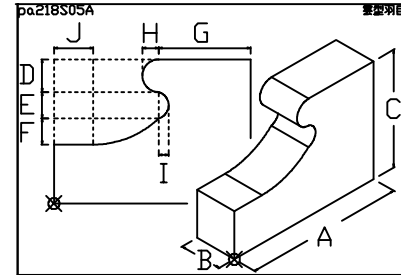
※ $B \geq A/2$

羽目／玉垣(1)

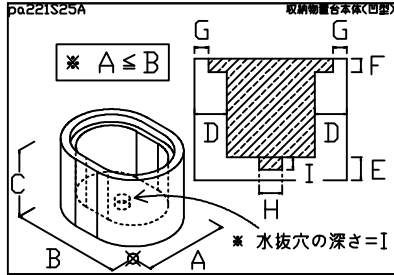


※数値によってはエアーになる場合があります

羽目／玉垣(2)

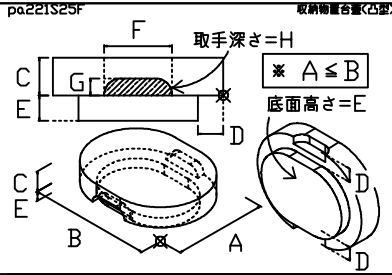


物置台

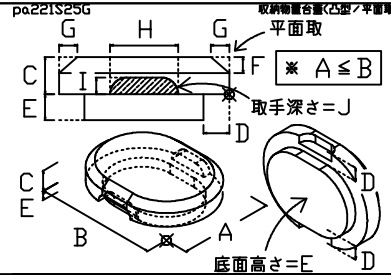


※ $A \leq B$

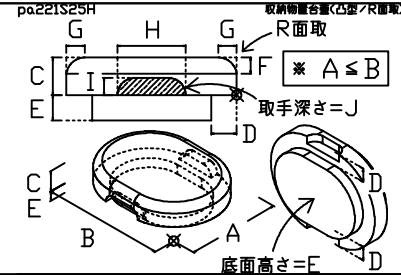
※ 水抜穴の深さ=I



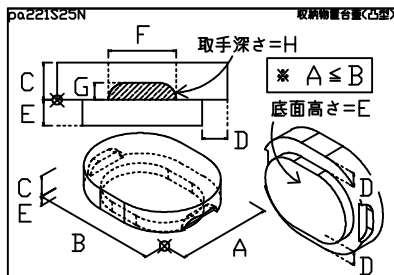
取手深さ=H
※ $A \leq B$
底面高さ=E



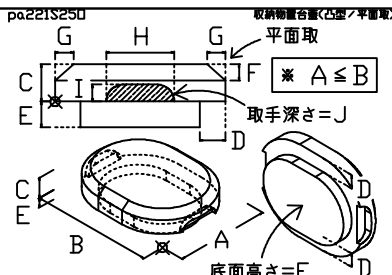
平面取
※ $A \leq B$
取手深さ=J
底面高さ=E



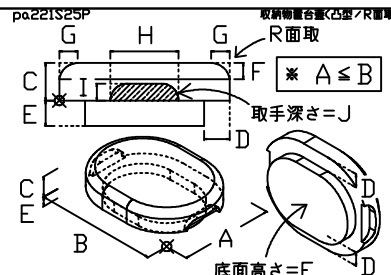
R面取
※ $A \leq B$
取手深さ=J
底面高さ=E



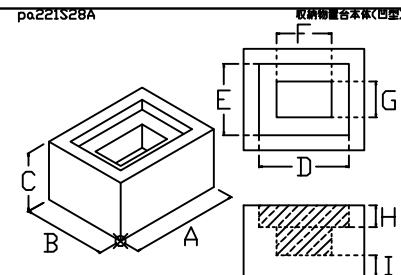
取手深さ=H
※ $A \leq B$
底面高さ=E



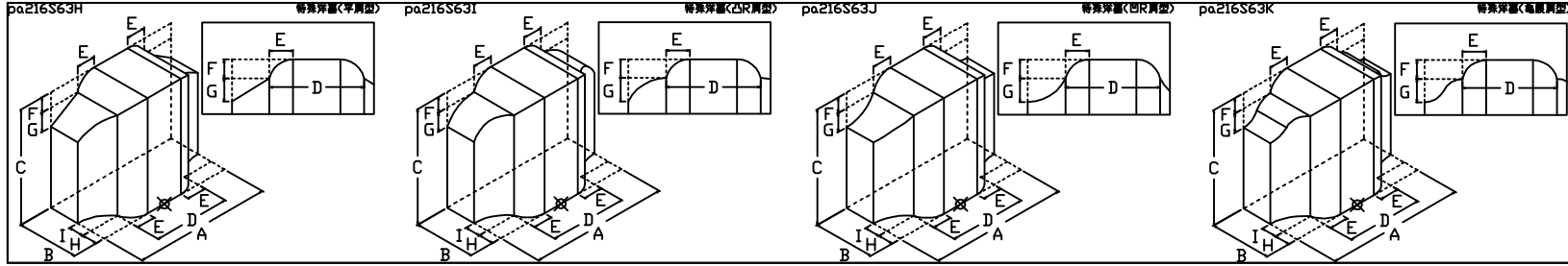
平面取
※ $A \leq B$
取手深さ=J
底面高さ=E



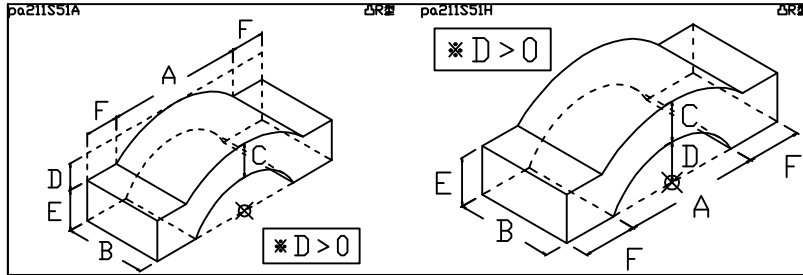
R面取
※ $A \leq B$
取手深さ=J
底面高さ=E



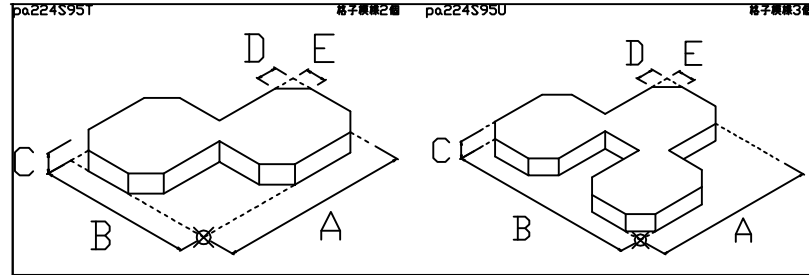
洋墓



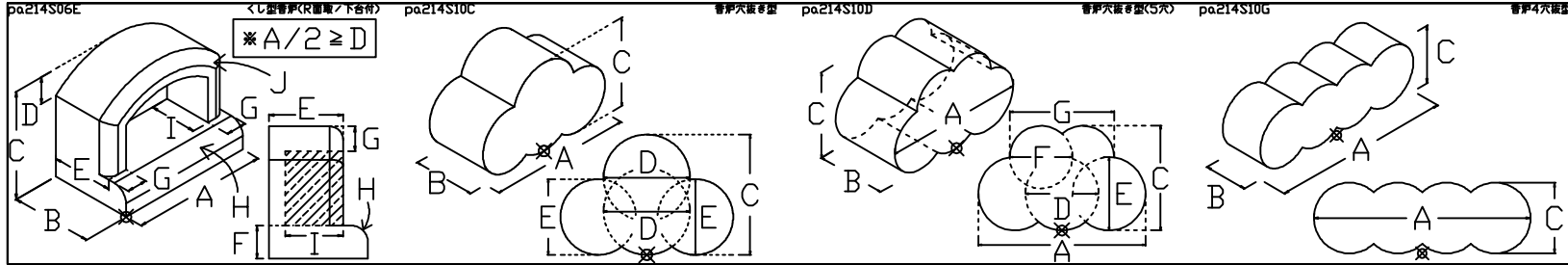
笠石



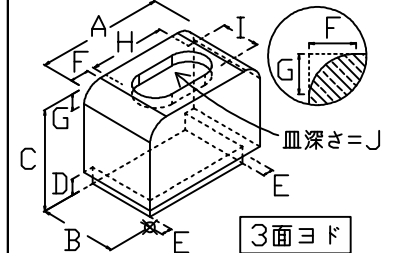
抜き型



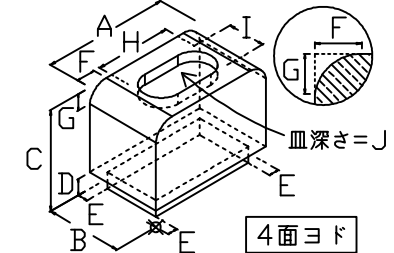
花立/香炉



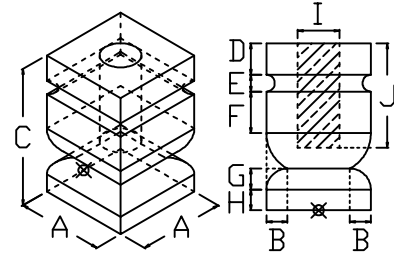
pa214S20H



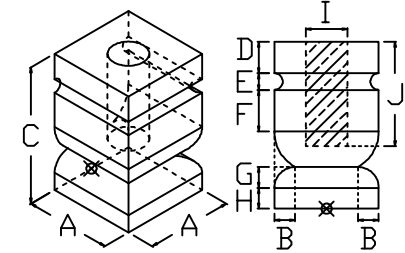
pa214S20I



pa214S31L



pa214S31M



塔婆立

pa210S04Q

塔婆立兼(4穴)タテ付

pa210S04R

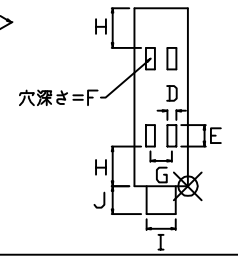
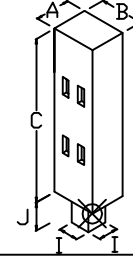
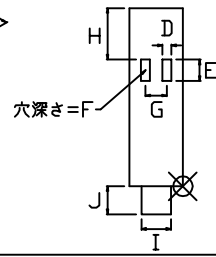
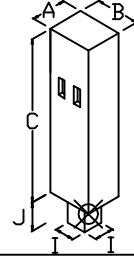
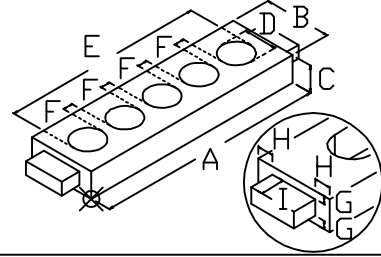
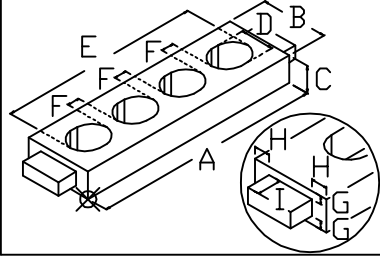
塔婆立兼(5穴)タテ付

pa210S18Q

角本ノ付柱(1層高穴明)

pa210S18P

角本ノ付柱(2層高穴明)



水鉢

pa220S03A

兩層尺水鉢形立穴付

